



THE EMPEROR HOTEL

英皇駿景酒店





The Emperor Hotel is a smoke-free hotel providing 299 rooms with ultimately sleek design, excellent services and cutting-edge facilities, assures you that your stay would be an unforgettable one.

The hotel is incredibly designed by the renowned Turkey-based design studio Autoban together with the prestigious French Botanist Patrick Blanc, The Emperor Hotel embraces the integrity of the sublime nature and contemporary aesthetics with the flourishing vertical garden and the seamlessly modern interior design. Explore together the whole-new experience here in The Emperor Hotel.

英皇駿景酒店提供299間無煙舒適客房，設計時尚別緻卻又愜意舒適；享受熱鬧卻能擁抱寧靜—英皇駿景酒店為你提供高雅環境、設備與服務，讓你感受香港都市氣息以外，同時體驗像家一樣的寫意、自在。

酒店由土耳其享負盛名的 Autoban Studio 操刀設計，配合法國植物學家 Patrick Blanc 的綠色理念，以壯觀的垂直花園及無與倫比的現代室內設計，展現大自然與當代美學完美結合下的和諧美感，讓入住體驗更與別不同。

SUPERIOR ROOM 高級客房 / DELUXE ROOM 豪華客房

Deluxe Room located on high floors, provides modern luxury design while overlooking the city. Both rooms feature one double bed or two single beds. It is a perfect choice for both business and leisure travelers.

豪華客房位處酒店的高樓層，一望無際的景觀令人心曠神怡。兩款客房均設有一張大床或兩張單人床，房間設計精巧時尚，流露出一樣的格調，是商務或休閒旅客的完美選擇。



22 SQM



1 King Size Bed (5 x 6'3)
/ 2 Twin Beds (3 x 6'3)



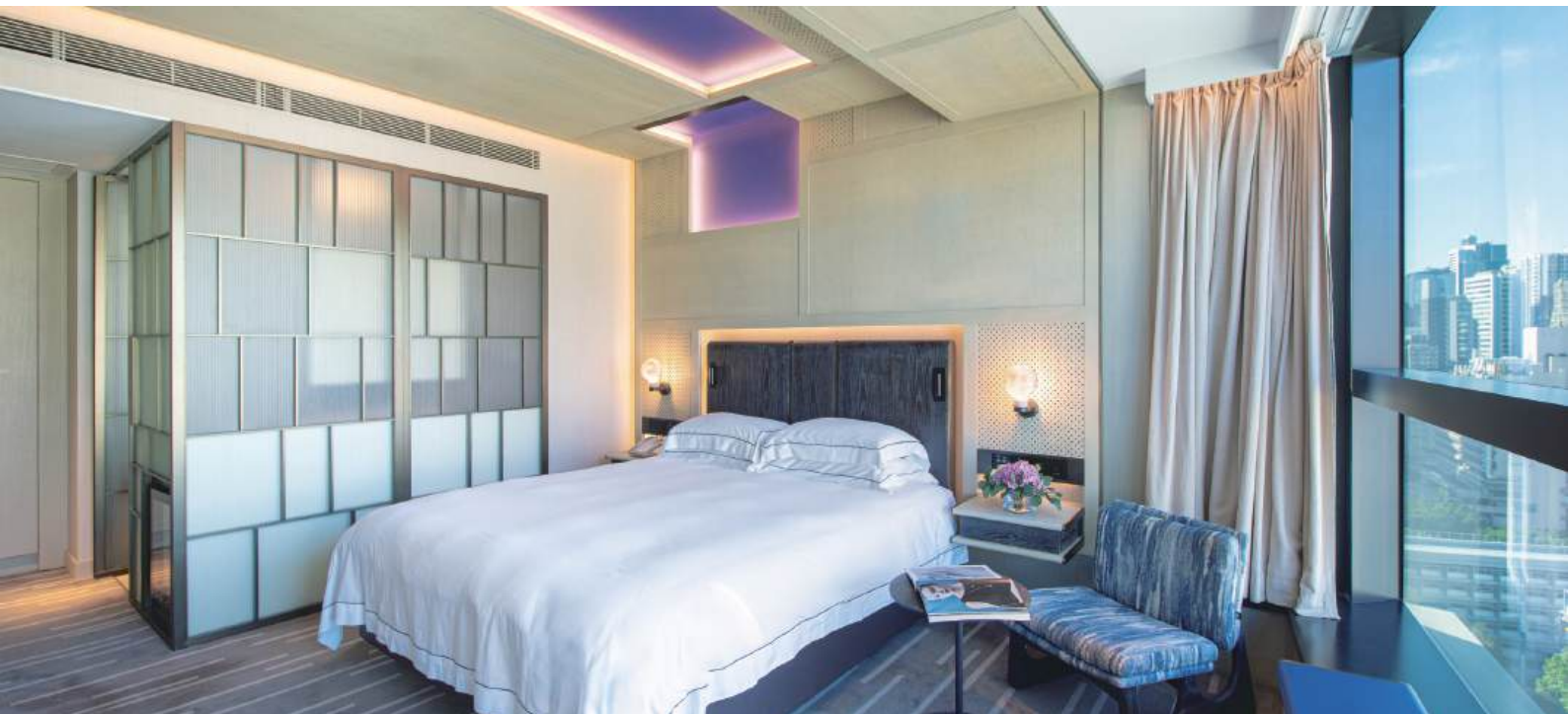
43"



EXECUTIVE CORNER ROOM 行政客房

Executive Corner Room offers a relaxing atmosphere and a wide view overlooking the city. It features one king size bed or two single beds, designed to cater to both leisure travelers and discerning professionals.

面積26平方米的行政客房設計獨特雅致，提供更寬敞舒適的空間及遼闊的景觀。房內設有一張雙人大床或兩張單人床以供選擇，適合商務或休閒旅客。



EXECUTIVE SUITE 行政套房

Located on top floor, the Executive Suite provides stunning city views of Hong Kong Island. This modern luxury designed suite with one king size bed or two single beds, with living room is ideal for business travelers. The hardwood floor makes the suite look natural and elegant.

行政套房位處最高層，飽覽香港島的迷人景色。套房寬敞舒適，設計時尚，配上高級木地板使房間更顯簡約高貴。房內設有一張雙人大床或兩張單人床，是商務或休閒旅客的完美選擇。





Consistently Rewarded 1-Michelin Star for 7 years onwards, Golden Valley intertwines Cantonese cuisine with a dash of Sichuan and Chongqing's spicy twist, showcasing the specialities of the refreshing yet traditional Chinese cuisine.

曾連續7年榮獲米芝蓮一星的駿景軒不僅僅是粵菜食府。駿景軒為廣東美饌加入四川及重慶菜的麻、辣、鮮、香，讓視覺味蕾體驗嶄新的傳統中國佳餚。

Capacity 用餐座位:
180 seats with 6 private rooms
180座及6間私人招待房

Reservations 訂座:
+852 2961 3330
goldenvalley@emperorhotel.com.hk

Opening Hours 營業時間:
Monday - Friday 星期一至五
11:00 - 16:00
18:00 - 22:30

Weekends & Public Holidays
週末及公眾假期
10:00 - 16:00
18:00 - 22:30



**MONKEY
CAFÉ**



With stylish decoration and high-quality mouth-watering delicacies, Monkey Café is an ideal choice for a business feast or a relaxing dining experience.

時尚簡潔的用餐環境，優質新鮮的食材，大廚用心打造的佳餚，Monkey Café 是商務飲宴或悠閒用餐的最佳選擇。

Capacity 用餐座位:
50 seats 50座

Reservations 訂座:
+852 2961 3340
monkeycafe@emperorhotel.com.hk

Opening Hours 營業時間:
Monday - Sunday 星期一至日
07:00 - 21:00



Secretly sits at the top of The Emperor Hotel is the definition of glamour and luxury in town. Whether you are looking to host launches, gatherings, shows, celebrations or weddings, The Crown is the event venue for you.

The Crown 如時光倒流般降臨於皇后大道東上, 坐落英皇駿景酒店的頂樓。The Crown 完美展現別具格調的聚會、展覽、慶祝活動、婚禮, 適合舉辦各種活動。

Capacity 用餐座位:
80 -90 seats with 2 private rooms
80-90座及2間私人貴賓房

Reservations 訂座:
+852 2961 33499
reservations@thecrownhk.com

Opening Hours 營業時間:
Monday - Saturday
Public Holidays & Eve
星期一至六, 公眾假期及前夕
17:00 - 02:00



GUEST SERVICES 服務及設施

Gym Room
Banquet Room
Complimentary in-room WiFi Service
Complimentary in-room Local Calls
24-Hours Medical Service
24-Hours Reception
Copy, Scan and Fax Services
Valet Parking
Shuttle Service
Luggage Storage Service
Concierge
Currency Exchange
Sightseeing Tours and Ticketing Service
Laundry and Dry Clean Service
Complimentary Newspapers in Lobby
Disable Rooms
Wheelchair Access
Wake-Up Call

健身房
宴會廳
免費WIFI上網
免費本地通話
24小時醫療服務
24小時客戶服務
複印、掃描及傳真服務
代客泊車服務
穿梭巴士服務
行李寄存服務
禮賓服務
外幣對換
代辦觀光及旅遊服務
洗衣及乾洗服務
大堂內提供免費報紙
傷健人士客房
輪椅通道
叫醒服務

| | |
|---------|---|
| 24/F | EXECUTIVE SUITE 行政套房 |
| 11-23/F | DELUXE ROOM EXECUTIVE CORNER ROOM 豪華客房/行政客房 |
| 3-10/F | SUPERIOR ROOM EXECUTIVE CORNER ROOM 豪華客房/行政客房 |
| 3/F | GYMNASIUM 健身房 |
| 1-2/F | GOLDEN VALLEY 駿景軒 |
| G/F | MONKEY CAFÉ LOBBY 大堂 |
| LG/F | PARKING 停車場 |

COMPLIMENTARY HOTEL SHUTTLE BUS SERVICE

免費酒店穿梭巴士服務

ROUTE 1

The Emperor Hotel
英皇駿景酒店



AEL HK Station (Central)
機場快線香港站 (中環)

From Hotel 由酒店開出 → Allied Kajima Building 77-79 Gloucester Road Wan Chai 灣仔聯合鹿島大廈 / 香港告士打道 77-79號 → Hong Kong Convention and Exhibition Centre* 香港灣仔會議展覽中心* → Central Harbourfront/ Pier No.9^ 中環海濱活動空間 / 九號碼頭^ → AEL HK Station (Central)# 機場快線香港站 (中環)# → To Hotel 往酒店

| | | | | | |
|-------|-------|-------|-------|-------------------------------|-------|
| 08:00 | 08:05 | 08:15 | 08:25 | 08:35 | 09:10 |
| 09:15 | 09:20 | 09:30 | 09:40 | 09:50 | 10:25 |
| 10:30 | 10:35 | 10:45 | 10:55 | 11:05 | 11:40 |
| 11:45 | 11:50 | 12:00 | 12:10 | 12:20 | 12:55 |
| 13:00 | 13:05 | 13:15 | 13:25 | 13:35 (drop-off only 只供落客) | |

Drop-off / pick-up point 各目的地落客/上客點:

*Hong Kong Convention and Exhibition Centre: Pick-up / drop-off areas at Expo Drive East

*香港灣仔會議展覽中心: 博覽道上落客區

^Central Harbourfront / Pier No.9: Man Kwong Street (near AIA Vitality Park)

^中環海濱活動空間 / 九號碼頭: 民光街 (近AIA Vitality 公園)

#AEL HK Station (Central): HK Station G/F (Exit near Customer Service Centre)

#機場快線香港站 (中環): 香港站G 層 (客務中心對出出口)

ROUTE 2

The Emperor Hotel
英皇駿景酒店



Causeway Bay Plaza 2
銅鑼灣廣場二期

From Hotel
由酒店開出

From Causeway Bay Plaza 2*
由銅鑼灣廣場二期開出*

| | | | |
|-------|-------|-------|-------|
| 08:15 | 15:00 | 08:35 | 15:20 |
| 09:00 | 15:45 | 09:20 | 16:05 |
| 09:45 | 16:30 | 10:05 | 16:50 |
| 10:30 | 17:15 | 10:50 | 17:35 |
| 11:15 | 18:00 | 11:35 | 18:20 |
| 12:00 | 18:45 | 12:20 | 19:05 |
| 12:45 | 19:30 | 13:05 | 19:50 |
| | 20:15 | | |

Drop-off / pick-up point 落客/上客點: ※駱克道462 - 478 號 (匯豐銀行對面)



Hotel LG Carpark
酒店LG停車場

Guests are advised to arrive at least 10 minutes in advance
乘客請提前不少於十分鐘候車

TERMS & CONDITIONS:

1. Shuttle bus service is exclusive to hotel in-house guest
2. Guests must present keycard folder or booking confirmation before boarding
3. For any enquiries, please contact our Duty Manager at extension "0"
4. Seats are limited and will be allocated on a first-come-first-served basis. Advance reservation at hotel departure is required
5. We assume no liability for any loss of property or valuable articles inside the baggage; any loss of personal belongings in the vehicle, fragile or perishable
6. Route and schedule are subject to change according to actual traffic conditions without prior notice. In event of Storm Warning Signal No. 8 or black rainstorm, the shuttle bus service will be suspended.
7. In case of any dispute, The Emperor Hotel reserves the right of final decision

條款及細則:

1. 穿梭巴士服務只供英皇駿景酒店住客使用
2. 客人須於登車前出示酒店匙套或入住證明
3. 如有任何查詢, 請致電內線"0"與酒店當值經理聯絡
4. 坐位有限, 先到先得, 由酒店開出的班次, 須提早預約
5. 本酒店一概不為車廂內或行李內任何物件之損壞或遺失負責
6. 巴士路線及時間需視乎實際交通情況而有所更改, 恕不另行通知。當8號烈風信號或黑色暴雨警告生效時, 酒店穿梭巴士服務將會暫停
7. 如有任何爭議, 英皇駿景酒店保留最終決定權



THE EMPEROR HOTEL

英皇駿景酒店



代客泊車服務

Valet Parking Service

上落客區設於皇后大道東及厚德里

Drop off on Queen's Road East & Hau Tak Lane



電車

Tram

110皇后大道東站(步行3分鐘)

110 Queen's Road East Stop (3 mins by foot)



港鐵

MTR

銅鑼灣站A出口(步行15分鐘)

Causeway Bay Station exit A (15 mins by foot)

會展站A3出口(步行15分鐘)

Exhibition Centre Station exit A (15 mins by foot)

灣仔站A3出口(步行10分鐘)

Wan Chai Station exit A3 (10 mins by foot)



THE EMPEROR HOTEL

英皇駿景酒店

373 Queen's Road East, Wanchai, Hong Kong (next to Sikh Temple)

香港灣仔皇后大道東373號(司徒拔道口, 錫克廟旁)

(852) 2893 3693 www.emperorhotel.com.hk



Scan to view soft copy